

∞ Tilton Crafts ∞

Counted Cross Stitch Chart



Alice ReDo

Stitch Count: 390 x 552

www.TiltonCrafts.com

Instructions

This design is recommended to be stitched over 1 on 25 count fabric, but you may use any count fabric that you are comfortable with. Traditionally, most will use 1 strand of floss for 22ct / 25ct / 28ct, and 2 strands of floss for 14ct / 16ct / 18ct. Charts are recommended to be stitched from page 1 top left to the last page bottom right. (see diagram below). Also, please take a moment to scan over your symbol list before you begin, as some symbols appear similar.

If the chart contains Kreinik 032 #4 (very fine braid) we recommend that you use one strand of the Kreinik along with one strand of white floss.

You may also use the tent stitch or full cross stitches depending on your preference. We want to thank you for purchasing this design and welcome any questions or comments that you may have at any time.

Website: www.TiltonCrafts.com

Email: Support@TiltonCrafts.com

Start your stitching on Page 1 and continue over to Page 6. Page 7 will start below your Page 1 stitching. Page 13 will start below your page 7 stitching, and so forth.

Page 1	Page 2	Page 3	Page 4	Page 5	Page 6
Page 7	Page 8	Page 9	Page 10	Page 11	Page 12
Page 13	Page 14	Page 15	Page 16	Page 17	Page 18
Page 19	Page 20	Page 21	Page 22	Page 23	Page 24
Page 25	Page 26	Page 27	Page 28	Page 29	Page 30
Page 31	Page 32	Page 33	Page 34	Page 35	Page 36
Page 37	Page 38	Page 39	Page 40	Page 41	Page 42

Cleaning & Care

When handling any needlework, always take the special care that is necessary to keep your work clean. Wash hands frequently to prevent body oils from staining the fabric or cross stitching.

Be sure to remove your cross stitching from the hoop each time you stop stitching to prevent hoop marks from soiling your fabric.

It is recommended that you use approximately 18" lengths of thread when stitching your project. This will help to avoid knotting, twisting, or fraying of the thread while you work.

Your project should be stored in a bag or workbasket when not being stitched to protect it from dust, spills, etc.

Washing Instructions For Cross Stitch

If you have followed the care instructions, you may not find it necessary to launder your piece before framing or finishing it. If, however, your piece has become soiled, wash it following the instructions below:

Always wash each cross stitch separately.

Wash your cross stitch in lukewarm water with a mild detergent or dishwashing liquid. Do NOT use Woolite, harsh detergents, or chlorine bleach.

Rinse cross stitch several times in clear water. Do not worry if water becomes colored when washing your piece – continue rinsing in clear water.

Roll the cross stitch between two clean towels squeezing gently without wringing – Do Not allow cross stitch piece to touch upon itself. Unroll towels and spread out piece flat to dry on a towel. Never leave damp cross stitch folded or in a heap.

To iron your piece, place the dry cross stitch face down between two clean towels and press with a warm, not hot, iron. To remove creases or fold lines from your piece, you may find it necessary to use the steam setting on your iron.

It is NOT recommended that Scotchgard or other products of this type be used on your projects as they may cause chemical reactions with your thread dyes.

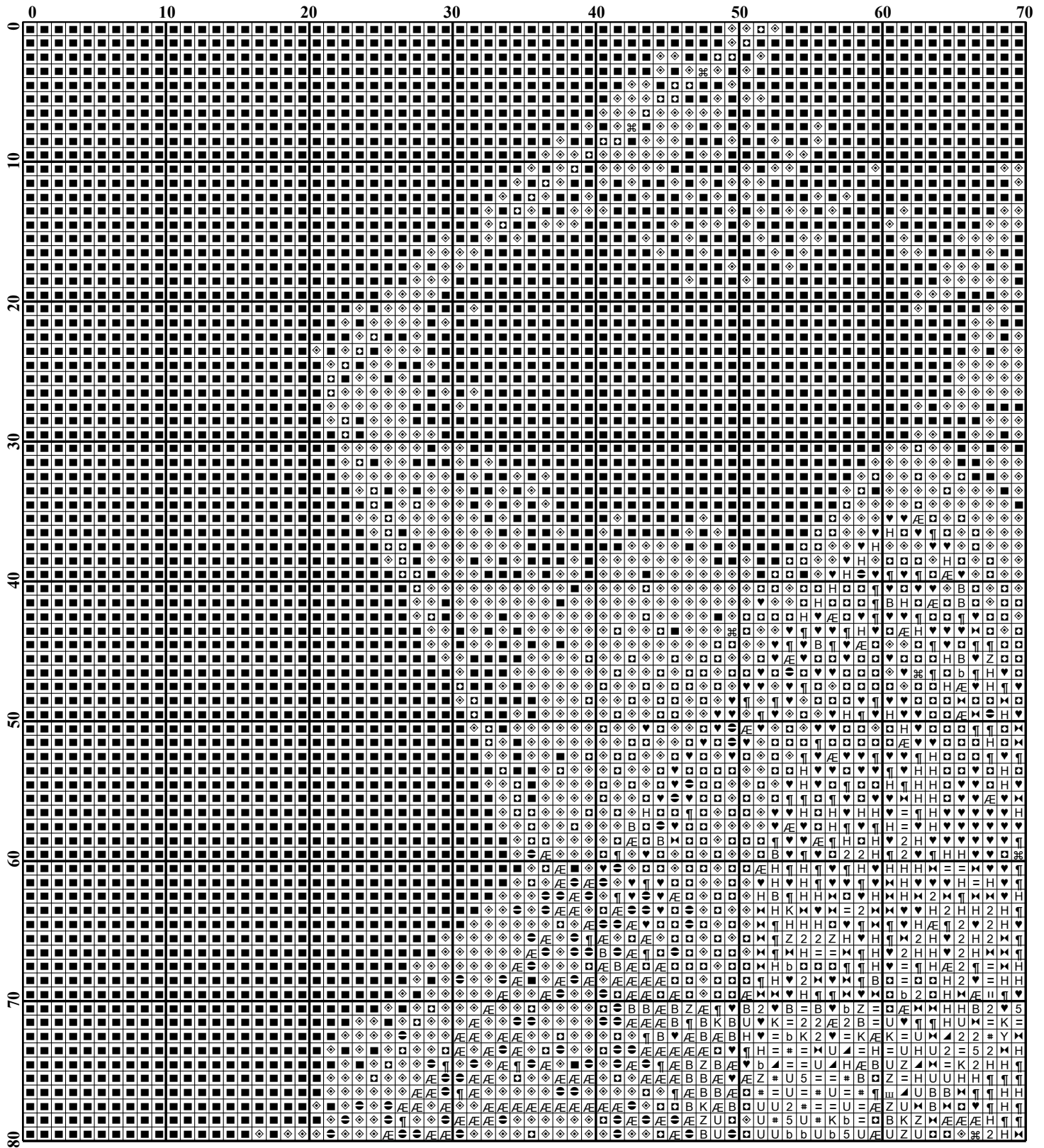
It is generally NOT recommended that your cross stitch be dry cleaned. However, certain fabrics (i.e. wools) may require dry cleaning. We suggest that you speak to your local dry cleaner, advising him that there may be a reaction between the thread dyes and the dry cleaning chemicals (i.e. benzene, trichlorethylene, etc).

Pattern Name: Alice ReDo
Designed By: Shelley Lee
Company: Tilton Crafts
Copyright: © 2012 Tilton Crafts - Artwork © Shu Mizoguchi
Fabric: White - Evenweave, Linen
Stitch Count: 390 W x 552 H
Size: 25ct, 15-1/2" x 22"

Symbol	Type	Number	Color	Skeins
□	DMC	165	Moss Green-VY LT	1
⊗	DMC	166	Moss Green-MD LT	1
Æ	DMC	300	Mahogany-VY DK	6
■	DMC	310	Black	10
▣	DMC	319	Pistachio Green-VY DK	1
◀	DMC	321	Christmas Red	1
n	DMC	372	Mustard-LT	1
‡	DMC	400	Mahogany-DK	3
⊙	DMC	402	Mahogany-VY LT	1
D	DMC	413	Pewter Gray-DK	1
U	DMC	420	Hazelnut Brown-DK	1
K	DMC	434	Brown-LT	1
♪	DMC	445	Lemon-LT	1
∞	DMC	470	Avocado Green-LT	1
7	DMC	471	Avocado Green-VY LT	1
&	DMC	500	Blue Green-VY DK	1
S	DMC	501	Blue Green-DK	1
E	DMC	520	Fern Green-DK	1
¢	DMC	523	Fern Green-LT	1
R	DMC	561	Jade-VY DK	1
6	DMC	608	Bright Orange	1
/	DMC	612	Drab Brown-LT	1
III	DMC	640	Beige Gray-VY DK	1
V	DMC	644	Beige Gray-MD	1
◆	DMC	645	Beaver Gray-VY DK	1
♣	DMC	666	Christmas Red-BRT	1
I	DMC	677	Old Gold-VY LT	1
#	DMC	680	Old Gold-DK	1
C	DMC	720	Orange Spice-DK	1
≡	DMC	726	Topaz-LT	1
a	DMC	728	Topaz	1
<	DMC	729	Old Gold-MD	1
O	DMC	730	Olive Green-VY DK	1
A	DMC	732	Olive Green	1
↗	DMC	733	Olive Green-MD	1
▤	DMC	738	Tan-VY LT	1
d	DMC	740	Tangerine	1
△	DMC	741	Tangerine-MD	1
▨	DMC	772	Yellow Green-VY LT	1
Ω	DMC	779	Cocoa-DK	1
b	DMC	780	Topaz-UL VY DK	1
5	DMC	781	Topaz-VY DK	1
F	DMC	782	Topaz-DK	1

Symbol	Type	Number	Color	Skeins
▼	DMC	783	Topaz-MD	1
┐	DMC	794	Cornflower Blue-LT	1
M	DMC	801	Coffee Brown-DK	1
T	DMC	807	Peacock Blue	1
▣	DMC	814	Garnet-DK	3
♥	DMC	815	Garnet-MD	1
⌘	DMC	817	Coral Red-VY DK	1
X	DMC	831	Golden Olive-MD	1
:	DMC	833	Golden Olive-LT	1
”	DMC	834	Golden Olive-VY LT	1
►	DMC	890	Pistachio Green-UL DK	1
N	DMC	900	Burnt Orange-DK	1
G	DMC	904	Parrot Green-VY DK	1
▲	DMC	907	Parrot Green-LT	1
L	DMC	912	Emerald Green-LT	1
H	DMC	919	Red Copper	1
⌘	DMC	920	Copper-MD	1
2	DMC	921	Copper	1
	DMC	922	Copper-LT	1
▲	DMC	930	Antique Blue-DK	1
::	DMC	934	Black Avocado Green	1
%	DMC	936	Avocado Green-VY DK	1
●	DMC	938	Coffee Brown-UL DK	4
▣	DMC	939	Navy Blue-VY DK	1
8	DMC	943	Bright Green-MD	1
☆	DMC	945	Tawny	1
P	DMC	946	Burnt Orange-MD	1
⌘	DMC	959	Sea Green-MD	1
⌘	DMC	964	Sea Green-LT	1
‘	DMC	971	Pumpkin	1
⊗	DMC	972	Canary-DK	1
B	DMC	975	Golden Brown-DK	1
Y	DMC	976	Golden Brown-MD	1
W	DMC	991	Aquamarine-DK	1
3	DMC	3012	Khaki Green-MD	1
×	DMC	3023	Brown Gray-LT	1
@	DMC	3031	Mocha Brown-VY DK	1
»	DMC	3046	Yellow Beige-MD	1
▲	DMC	3064	Desert Sand	1
↗	DMC	3078	Golden Yellow-VY LT	1
—	DMC	3348	Yellow Green-LT	1
e	DMC	3363	Pine Green-MD	1
¥	DMC	3364	Pine Green	1
◇	DMC	3371	Black Brown	8
4	DMC	3743	Antique Violet-VY LT	1
9	DMC	3768	Gray Green-DK	1
♡	DMC	3770	Tawny-VY LT	1
=	DMC	3776	Mahogany-LT	1
⌘	DMC	3787	Brown Gray-DK	1
✕	DMC	3799	Pewter Gray-VY DK	1
●	DMC	3809	Turquoise-VY DK	1

Symbol	Type	Number	Color	Skeins
★	DMC	3818	Emerald Green-UL VY DK	1
J	DMC	3821	Straw	1
m	DMC	3822	Straw-LT	1
∇	DMC	3827	Golden Brown-Pale	1
Π	DMC	3845	Bright Turquoise-MD	1
●	DMC	3846	Bright Turquoise-LT	1
BS	DMC	3847	Teal Green-DK	1
§	DMC	3849	Teal Green-LT	1
<u>h</u>	DMC	3850	Bright Green-DK	1
✓	DMC	3852	Straw-VY DK	1
∞	DMC	3854	Autumn Gold-MD	1
▷	DMC	3855	Autumn Gold-LT	1
Z	DMC	3858	Rosewood-MD	1
+	DMC	3862	Mocha Beige-DK	1

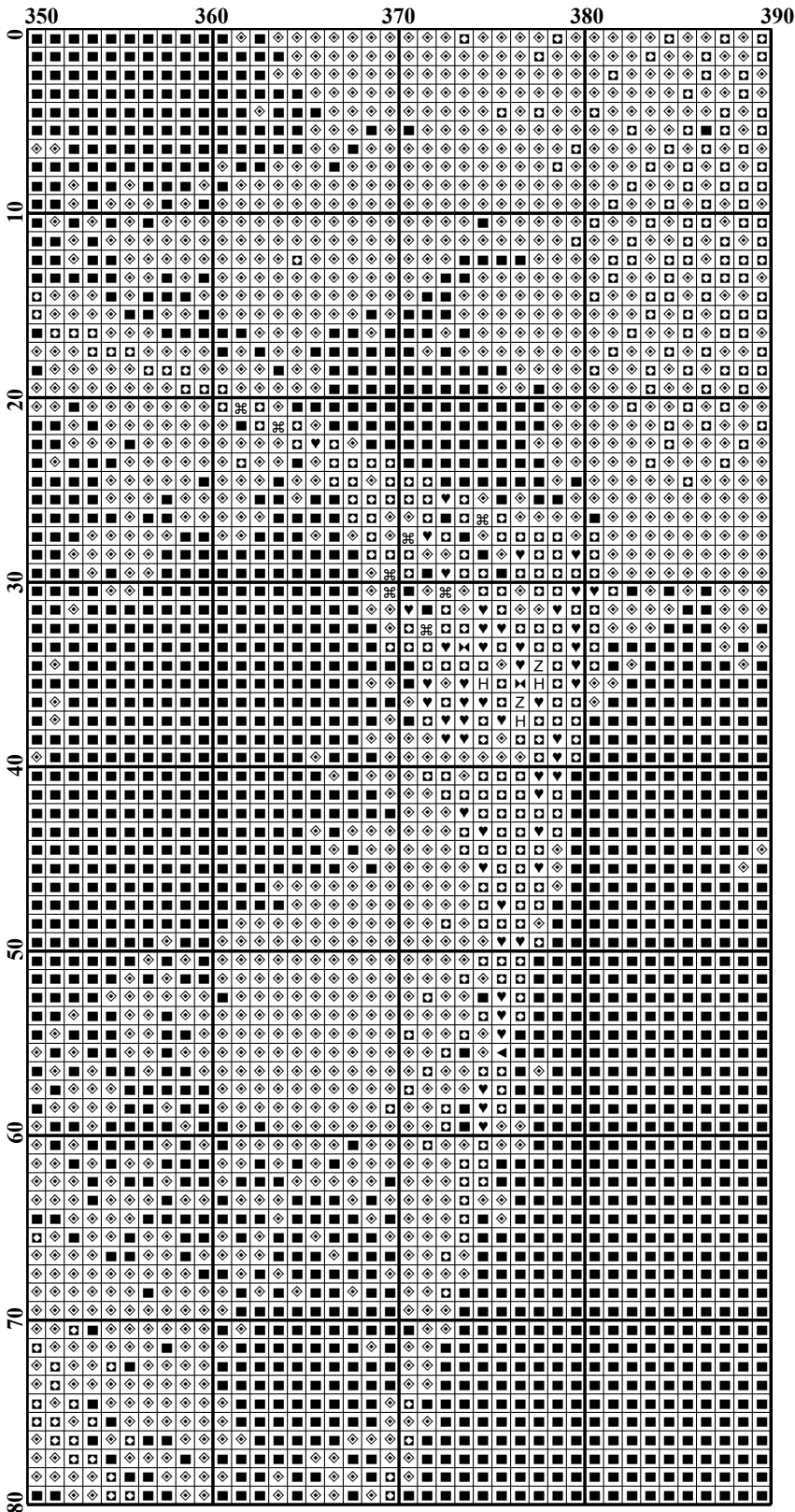


	70	80	90	100	110	120	130	140
0	■	■	■	■	■	■	■	■
10	■	■	■	■	■	■	■	■
20	■	■	■	■	■	■	■	■
30	■	■	■	■	■	■	■	■
40	■	■	■	■	■	■	■	■
50	■	■	■	■	■	■	■	■
60	■	■	■	■	■	■	■	■
70	■	■	■	■	■	■	■	■
80	■	■	■	■	■	■	■	■

	140	150	160	170	180	190	200	210
0	AE	AE	AE	AE	AE	AE	AE	AE
1	AE	AE	AE	AE	AE	AE	AE	AE
2	AE	AE	AE	AE	AE	AE	AE	AE
3	AE	AE	AE	AE	AE	AE	AE	AE
4	AE	AE	AE	AE	AE	AE	AE	AE
5	AE	AE	AE	AE	AE	AE	AE	AE
6	AE	AE	AE	AE	AE	AE	AE	AE
7	AE	AE	AE	AE	AE	AE	AE	AE
8	AE	AE	AE	AE	AE	AE	AE	AE
9	AE	AE	AE	AE	AE	AE	AE	AE
10	AE	AE	AE	AE	AE	AE	AE	AE
11	AE	AE	AE	AE	AE	AE	AE	AE
12	AE	AE	AE	AE	AE	AE	AE	AE
13	AE	AE	AE	AE	AE	AE	AE	AE
14	AE	AE	AE	AE	AE	AE	AE	AE
15	AE	AE	AE	AE	AE	AE	AE	AE
16	AE	AE	AE	AE	AE	AE	AE	AE
17	AE	AE	AE	AE	AE	AE	AE	AE
18	AE	AE	AE	AE	AE	AE	AE	AE
19	AE	AE	AE	AE	AE	AE	AE	AE
20	AE	AE	AE	AE	AE	AE	AE	AE
21	AE	AE	AE	AE	AE	AE	AE	AE
22	AE	AE	AE	AE	AE	AE	AE	AE
23	AE	AE	AE	AE	AE	AE	AE	AE
24	AE	AE	AE	AE	AE	AE	AE	AE
25	AE	AE	AE	AE	AE	AE	AE	AE
26	AE	AE	AE	AE	AE	AE	AE	AE
27	AE	AE	AE	AE	AE	AE	AE	AE
28	AE	AE	AE	AE	AE	AE	AE	AE
29	AE	AE	AE	AE	AE	AE	AE	AE
30	AE	AE	AE	AE	AE	AE	AE	AE
31	AE	AE	AE	AE	AE	AE	AE	AE
32	AE	AE	AE	AE	AE	AE	AE	AE
33	AE	AE	AE	AE	AE	AE	AE	AE
34	AE	AE	AE	AE	AE	AE	AE	AE
35	AE	AE	AE	AE	AE	AE	AE	AE
36	AE	AE	AE	AE	AE	AE	AE	AE
37	AE	AE	AE	AE	AE	AE	AE	AE
38	AE	AE	AE	AE	AE	AE	AE	AE
39	AE	AE	AE	AE	AE	AE	AE	AE
40	AE	AE	AE	AE	AE	AE	AE	AE
41	AE	AE	AE	AE	AE	AE	AE	AE
42	AE	AE	AE	AE	AE	AE	AE	AE
43	AE	AE	AE	AE	AE	AE	AE	AE
44	AE	AE	AE	AE	AE	AE	AE	AE
45	AE	AE	AE	AE	AE	AE	AE	AE
46	AE	AE	AE	AE	AE	AE	AE	AE
47	AE	AE	AE	AE	AE	AE	AE	AE
48	AE	AE	AE	AE	AE	AE	AE	AE
49	AE	AE	AE	AE	AE	AE	AE	AE
50	AE	AE	AE	AE	AE	AE	AE	AE
51	AE	AE	AE	AE	AE	AE	AE	AE
52	AE	AE	AE	AE	AE	AE	AE	AE
53	AE	AE	AE	AE	AE	AE	AE	AE
54	AE	AE	AE	AE	AE	AE	AE	AE
55	AE	AE	AE	AE	AE	AE	AE	AE
56	AE	AE	AE	AE	AE	AE	AE	AE
57	AE	AE	AE	AE	AE	AE	AE	AE
58	AE	AE	AE	AE	AE	AE	AE	AE
59	AE	AE	AE	AE	AE	AE	AE	AE
60	AE	AE	AE	AE	AE	AE	AE	AE
61	AE	AE	AE	AE	AE	AE	AE	AE
62	AE	AE	AE	AE	AE	AE	AE	AE
63	AE	AE	AE	AE	AE	AE	AE	AE
64	AE	AE	AE	AE	AE	AE	AE	AE
65	AE	AE	AE	AE	AE	AE	AE	AE
66	AE	AE	AE	AE	AE	AE	AE	AE
67	AE	AE	AE	AE	AE	AE	AE	AE
68	AE	AE	AE	AE	AE	AE	AE	AE
69	AE	AE	AE	AE	AE	AE	AE	AE
70	AE	AE	AE	AE	AE	AE	AE	AE
71	AE	AE	AE	AE	AE	AE	AE	AE
72	AE	AE	AE	AE	AE	AE	AE	AE
73	AE	AE	AE	AE	AE	AE	AE	AE
74	AE	AE	AE	AE	AE	AE	AE	AE
75	AE	AE	AE	AE	AE	AE	AE	AE
76	AE	AE	AE	AE	AE	AE	AE	AE
77	AE	AE	AE	AE	AE	AE	AE	AE
78	AE	AE	AE	AE	AE	AE	AE	AE
79	AE	AE	AE	AE	AE	AE	AE	AE
80	AE	AE	AE	AE	AE	AE	AE	AE

210	220	230	240	250	260	270	280
0
10
20
30
40
50
60
70
80

	280	290	300	310	320	330	340	350
0	C	C	C	C	C	C	C	C
1	C	C	C	C	C	C	C	C
2	C	C	C	C	C	C	C	C
3	C	C	C	C	C	C	C	C
4	C	C	C	C	C	C	C	C
5	C	C	C	C	C	C	C	C
6	C	C	C	C	C	C	C	C
7	C	C	C	C	C	C	C	C
8	C	C	C	C	C	C	C	C
9	C	C	C	C	C	C	C	C
10	C	C	C	C	C	C	C	C
11	C	C	C	C	C	C	C	C
12	C	C	C	C	C	C	C	C
13	C	C	C	C	C	C	C	C
14	C	C	C	C	C	C	C	C
15	C	C	C	C	C	C	C	C
16	C	C	C	C	C	C	C	C
17	C	C	C	C	C	C	C	C
18	C	C	C	C	C	C	C	C
19	C	C	C	C	C	C	C	C
20	C	C	C	C	C	C	C	C
21	C	C	C	C	C	C	C	C
22	C	C	C	C	C	C	C	C
23	C	C	C	C	C	C	C	C
24	C	C	C	C	C	C	C	C
25	C	C	C	C	C	C	C	C
26	C	C	C	C	C	C	C	C
27	C	C	C	C	C	C	C	C
28	C	C	C	C	C	C	C	C
29	C	C	C	C	C	C	C	C
30	C	C	C	C	C	C	C	C
31	C	C	C	C	C	C	C	C
32	C	C	C	C	C	C	C	C
33	C	C	C	C	C	C	C	C
34	C	C	C	C	C	C	C	C
35	C	C	C	C	C	C	C	C
36	C	C	C	C	C	C	C	C
37	C	C	C	C	C	C	C	C
38	C	C	C	C	C	C	C	C
39	C	C	C	C	C	C	C	C
40	C	C	C	C	C	C	C	C
41	C	C	C	C	C	C	C	C
42	C	C	C	C	C	C	C	C
43	C	C	C	C	C	C	C	C
44	C	C	C	C	C	C	C	C
45	C	C	C	C	C	C	C	C
46	C	C	C	C	C	C	C	C
47	C	C	C	C	C	C	C	C
48	C	C	C	C	C	C	C	C
49	C	C	C	C	C	C	C	C
50	C	C	C	C	C	C	C	C
51	C	C	C	C	C	C	C	C
52	C	C	C	C	C	C	C	C
53	C	C	C	C	C	C	C	C
54	C	C	C	C	C	C	C	C
55	C	C	C	C	C	C	C	C
56	C	C	C	C	C	C	C	C
57	C	C	C	C	C	C	C	C
58	C	C	C	C	C	C	C	C
59	C	C	C	C	C	C	C	C
60	C	C	C	C	C	C	C	C
61	C	C	C	C	C	C	C	C
62	C	C	C	C	C	C	C	C
63	C	C	C	C	C	C	C	C
64	C	C	C	C	C	C	C	C
65	C	C	C	C	C	C	C	C
66	C	C	C	C	C	C	C	C
67	C	C	C	C	C	C	C	C
68	C	C	C	C	C	C	C	C
69	C	C	C	C	C	C	C	C
70	C	C	C	C	C	C	C	C
71	C	C	C	C	C	C	C	C
72	C	C	C	C	C	C	C	C
73	C	C	C	C	C	C	C	C
74	C	C	C	C	C	C	C	C
75	C	C	C	C	C	C	C	C
76	C	C	C	C	C	C	C	C
77	C	C	C	C	C	C	C	C
78	C	C	C	C	C	C	C	C
79	C	C	C	C	C	C	C	C
80	C	C	C	C	C	C	C	C



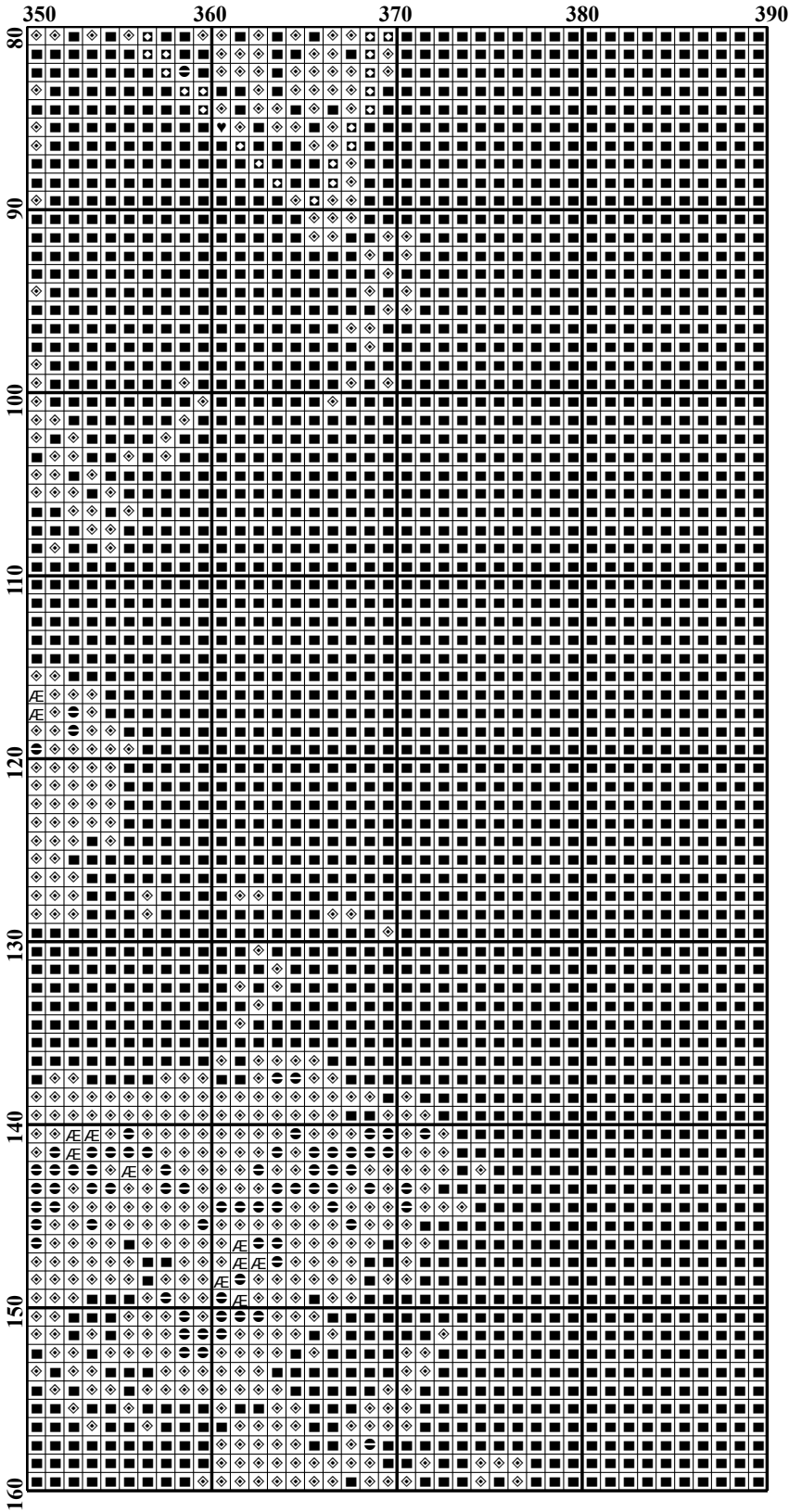
	0	10	20	30	40	50	60	70
80	■	■	■	■	■	■	■	■
90	■	■	■	■	■	■	■	■
100	■	■	■	■	■	■	■	■
110	■	■	■	■	■	■	■	■
120	■	■	■	■	■	■	■	■
130	■	■	■	■	■	■	■	■
140	■	■	■	■	■	■	■	■
150	■	■	■	■	■	■	■	■
160	■	■	■	■	■	■	■	■

	70	80	90	100	110	120	130	140
80	⬆	⬆	⬆	⬆	⬆	⬆	⬆	⬆
90	⬆	⬆	⬆	⬆	⬆	⬆	⬆	⬆
100	⬆	⬆	⬆	⬆	⬆	⬆	⬆	⬆
110	⬆	⬆	⬆	⬆	⬆	⬆	⬆	⬆
120	⬆	⬆	⬆	⬆	⬆	⬆	⬆	⬆
130	⬆	⬆	⬆	⬆	⬆	⬆	⬆	⬆
140	⬆	⬆	⬆	⬆	⬆	⬆	⬆	⬆
150	⬆	⬆	⬆	⬆	⬆	⬆	⬆	⬆
160	⬆	⬆	⬆	⬆	⬆	⬆	⬆	⬆

	140	150	160	170	180	190	200	210
80	⬆	⬆	⬆	⬆	⬆	⬆	⬆	⬆
90	⬆	⬆	⬆	⬆	⬆	⬆	⬆	⬆
100	⬆	⬆	⬆	⬆	⬆	⬆	⬆	⬆
110	⬆	⬆	⬆	⬆	⬆	⬆	⬆	⬆
120	⬆	⬆	⬆	⬆	⬆	⬆	⬆	⬆
130	⬆	⬆	⬆	⬆	⬆	⬆	⬆	⬆
140	⬆	⬆	⬆	⬆	⬆	⬆	⬆	⬆
150	⬆	⬆	⬆	⬆	⬆	⬆	⬆	⬆
160	⬆	⬆	⬆	⬆	⬆	⬆	⬆	⬆

[illegible]

[illegible]

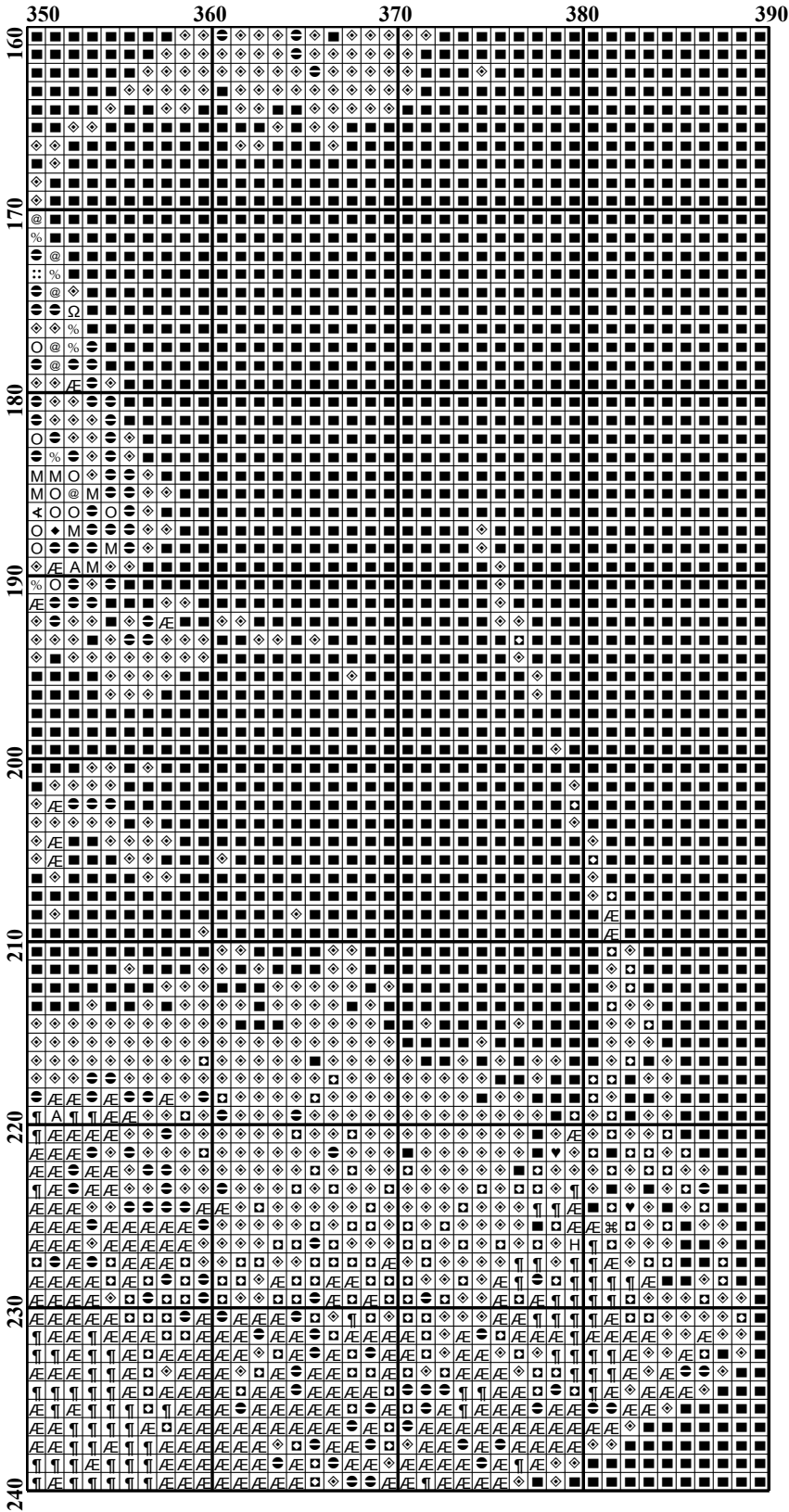


[illegible]

	140	150	160	170	180	190	200	210
160	F	/	/	/	/	/	/	/
170	F	/	/	/	/	/	/	/
180	F	/	/	/	/	/	/	/
190	F	/	/	/	/	/	/	/
200	F	/	/	/	/	/	/	/
210	F	/	/	/	/	/	/	/
220	F	/	/	/	/	/	/	/
230	F	/	/	/	/	/	/	/
240	F	/	/	/	/	/	/	/

[illegible]

[illegible]



[illegible]

[illegible]

	140	150	160	170	180	190	200	210
240	140	150	160	170	180	190	200	210
250	250	250	250	250	250	250	250	250
260	260	260	260	260	260	260	260	260
270	270	270	270	270	270	270	270	270
280	280	280	280	280	280	280	280	280
290	290	290	290	290	290	290	290	290
300	300	300	300	300	300	300	300	300
310	310	310	310	310	310	310	310	310
320	320	320	320	320	320	320	320	320

	210	220	230	240	250	260	270	280
240	✕	✕	✕	✕	✕	✕	✕	✕
250	✕	✕	✕	✕	✕	✕	✕	✕
260	✕	✕	✕	✕	✕	✕	✕	✕
270	✕	✕	✕	✕	✕	✕	✕	✕
280	✕	✕	✕	✕	✕	✕	✕	✕
290	✕	✕	✕	✕	✕	✕	✕	✕
300	✕	✕	✕	✕	✕	✕	✕	✕
310	✕	✕	✕	✕	✕	✕	✕	✕
320	✕	✕	✕	✕	✕	✕	✕	✕

	280	290	300	310	320	330	340	350
240	✓	✓	✓	✓	✓	✓	✓	✓
250	✓	✓	✓	✓	✓	✓	✓	✓
260	✓	✓	✓	✓	✓	✓	✓	✓
270	✓	✓	✓	✓	✓	✓	✓	✓
280	✓	✓	✓	✓	✓	✓	✓	✓
290	✓	✓	✓	✓	✓	✓	✓	✓
300	✓	✓	✓	✓	✓	✓	✓	✓
310	✓	✓	✓	✓	✓	✓	✓	✓
320	✓	✓	✓	✓	✓	✓	✓	✓
330	✓	✓	✓	✓	✓	✓	✓	✓
340	✓	✓	✓	✓	✓	✓	✓	✓
350	✓	✓	✓	✓	✓	✓	✓	✓

	350	360	370	380	390
240	1	1	1	1	1
241	1	1	1	1	1
242	1	1	1	1	1
243	1	1	1	1	1
244	1	1	1	1	1
245	1	1	1	1	1
246	1	1	1	1	1
247	1	1	1	1	1
248	1	1	1	1	1
249	1	1	1	1	1
250	1	1	1	1	1
251	1	1	1	1	1
252	1	1	1	1	1
253	1	1	1	1	1
254	1	1	1	1	1
255	1	1	1	1	1
256	1	1	1	1	1
257	1	1	1	1	1
258	1	1	1	1	1
259	1	1	1	1	1
260	1	1	1	1	1
261	1	1	1	1	1
262	1	1	1	1	1
263	1	1	1	1	1
264	1	1	1	1	1
265	1	1	1	1	1
266	1	1	1	1	1
267	1	1	1	1	1
268	1	1	1	1	1
269	1	1	1	1	1
270	1	1	1	1	1
271	1	1	1	1	1
272	1	1	1	1	1
273	1	1	1	1	1
274	1	1	1	1	1
275	1	1	1	1	1
276	1	1	1	1	1
277	1	1	1	1	1
278	1	1	1	1	1
279	1	1	1	1	1
280	1	1	1	1	1
281	1	1	1	1	1
282	1	1	1	1	1
283	1	1	1	1	1
284	1	1	1	1	1
285	1	1	1	1	1
286	1	1	1	1	1
287	1	1	1	1	1
288	1	1	1	1	1
289	1	1	1	1	1
290	1	1	1	1	1
291	1	1	1	1	1
292	1	1	1	1	1
293	1	1	1	1	1
294	1	1	1	1	1
295	1	1	1	1	1
296	1	1	1	1	1
297	1	1	1	1	1
298	1	1	1	1	1
299	1	1	1	1	1
300	1	1	1	1	1
301	1	1	1	1	1
302	1	1	1	1	1
303	1	1	1	1	1
304	1	1	1	1	1
305	1	1	1	1	1
306	1	1	1	1	1
307	1	1	1	1	1
308	1	1	1	1	1
309	1	1	1	1	1
310	1	1	1	1	1
311	1	1	1	1	1
312	1	1	1	1	1
313	1	1	1	1	1
314	1	1	1	1	1
315	1	1	1	1	1
316	1	1	1	1	1
317	1	1	1	1	1
318	1	1	1	1	1
319	1	1	1	1	1
320	1	1	1	1	1

	0	10	20	30	40	50	60	70
320								
330								
340								
350								
360								
370								
380								
390								
400								

[illegible]

	140	150	160	170	180	190	200	210
320	140	150	160	170	180	190	200	210
330								
340								
350								
360								
370								
380								
390								
400								

210	220	230	240	250	260	270	280
320	E	K	Q	Q	Q	Q	Q
330	A	A	A	A	A	A	A
340	E	E	E	E	E	E	E
350	E	E	E	E	E	E	E
360	E	E	E	E	E	E	E
370	E	E	E	E	E	E	E
380	E	E	E	E	E	E	E
390	E	E	E	E	E	E	E
400	E	E	E	E	E	E	E

[illegible]

	350	360	370	380	390
320	CHH	HH	HH	HH	HH
321	CHH	HH	HH	HH	HH
322	CHH	HH	HH	HH	HH
323	CHH	HH	HH	HH	HH
324	CHH	HH	HH	HH	HH
325	CHH	HH	HH	HH	HH
326	CHH	HH	HH	HH	HH
327	CHH	HH	HH	HH	HH
328	CHH	HH	HH	HH	HH
329	CHH	HH	HH	HH	HH
330	CHH	HH	HH	HH	HH
331	CHH	HH	HH	HH	HH
332	CHH	HH	HH	HH	HH
333	CHH	HH	HH	HH	HH
334	CHH	HH	HH	HH	HH
335	CHH	HH	HH	HH	HH
336	CHH	HH	HH	HH	HH
337	CHH	HH	HH	HH	HH
338	CHH	HH	HH	HH	HH
339	CHH	HH	HH	HH	HH
340	CHH	HH	HH	HH	HH
341	CHH	HH	HH	HH	HH
342	CHH	HH	HH	HH	HH
343	CHH	HH	HH	HH	HH
344	CHH	HH	HH	HH	HH
345	CHH	HH	HH	HH	HH
346	CHH	HH	HH	HH	HH
347	CHH	HH	HH	HH	HH
348	CHH	HH	HH	HH	HH
349	CHH	HH	HH	HH	HH
350	CHH	HH	HH	HH	HH
351	CHH	HH	HH	HH	HH
352	CHH	HH	HH	HH	HH
353	CHH	HH	HH	HH	HH
354	CHH	HH	HH	HH	HH
355	CHH	HH	HH	HH	HH
356	CHH	HH	HH	HH	HH
357	CHH	HH	HH	HH	HH
358	CHH	HH	HH	HH	HH
359	CHH	HH	HH	HH	HH
360	CHH	HH	HH	HH	HH
361	CHH	HH	HH	HH	HH
362	CHH	HH	HH	HH	HH
363	CHH	HH	HH	HH	HH
364	CHH	HH	HH	HH	HH
365	CHH	HH	HH	HH	HH
366	CHH	HH	HH	HH	HH
367	CHH	HH	HH	HH	HH
368	CHH	HH	HH	HH	HH
369	CHH	HH	HH	HH	HH
370	CHH	HH	HH	HH	HH
371	CHH	HH	HH	HH	HH
372	CHH	HH	HH	HH	HH
373	CHH	HH	HH	HH	HH
374	CHH	HH	HH	HH	HH
375	CHH	HH	HH	HH	HH
376	CHH	HH	HH	HH	HH
377	CHH	HH	HH	HH	HH
378	CHH	HH	HH	HH	HH
379	CHH	HH	HH	HH	HH
380	CHH	HH	HH	HH	HH
381	CHH	HH	HH	HH	HH
382	CHH	HH	HH	HH	HH
383	CHH	HH	HH	HH	HH
384	CHH	HH	HH	HH	HH
385	CHH	HH	HH	HH	HH
386	CHH	HH	HH	HH	HH
387	CHH	HH	HH	HH	HH
388	CHH	HH	HH	HH	HH
389	CHH	HH	HH	HH	HH
390	CHH	HH	HH	HH	HH
391	CHH	HH	HH	HH	HH
392	CHH	HH	HH	HH	HH
393	CHH	HH	HH	HH	HH
394	CHH	HH	HH	HH	HH
395	CHH	HH	HH	HH	HH
396	CHH	HH	HH	HH	HH
397	CHH	HH	HH	HH	HH
398	CHH	HH	HH	HH	HH
399	CHH	HH	HH	HH	HH
400	CHH	HH	HH	HH	HH

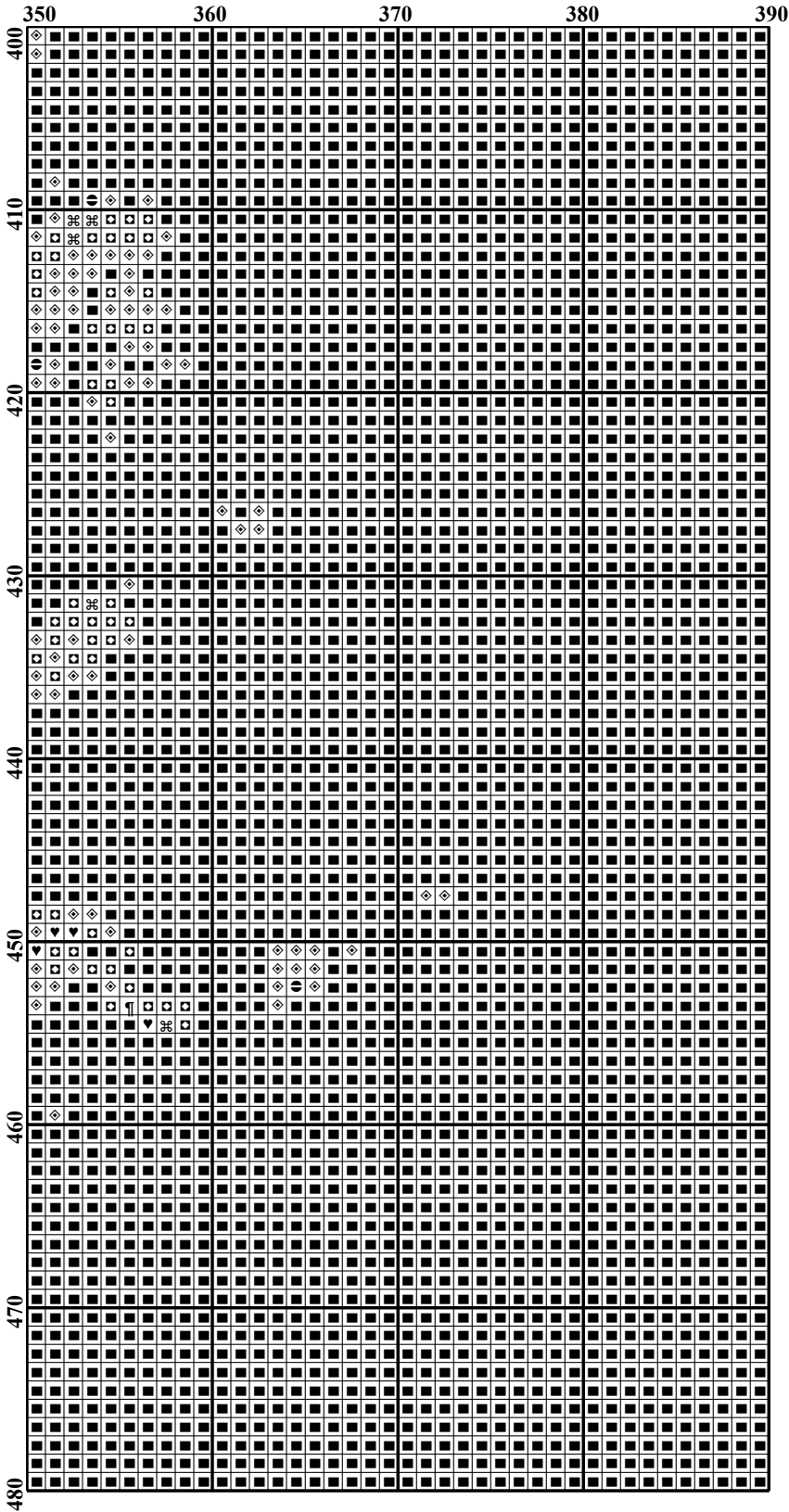
0	10	20	30	40	50	60	70
400
410
420
430
440
450
460
470
480

[illegible]

[illegible]

[illegible]

[illegible]



	0	10	20	30	40	50	60	70
480	♠	♠	♠	♠	♠	♠	♠	♠
490	♠	♠	♠	♠	♠	♠	♠	♠
500	♠	♠	♠	♠	♠	♠	♠	♠
510	♠	♠	♠	♠	♠	♠	♠	♠
520	♠	♠	♠	♠	♠	♠	♠	♠
530	♠	♠	♠	♠	♠	♠	♠	♠
540	♠	♠	♠	♠	♠	♠	♠	♠
550	♠	♠	♠	♠	♠	♠	♠	♠

	70	80	90	100	110	120	130	140
480	♥	♠	♣	♦	♠	♣	♦	♠
490	♠	♣	♦	♠	♣	♦	♠	♣
500	♣	♦	♠	♣	♦	♠	♣	♦
510	♦	♠	♣	♦	♠	♣	♦	♠
520	♠	♣	♦	♠	♣	♦	♠	♣
530	♣	♦	♠	♣	♦	♠	♣	♦
540	♦	♠	♣	♦	♠	♣	♦	♠
550	♠	♣	♦	♠	♣	♦	♠	♣

[illegible]

[illegible]

